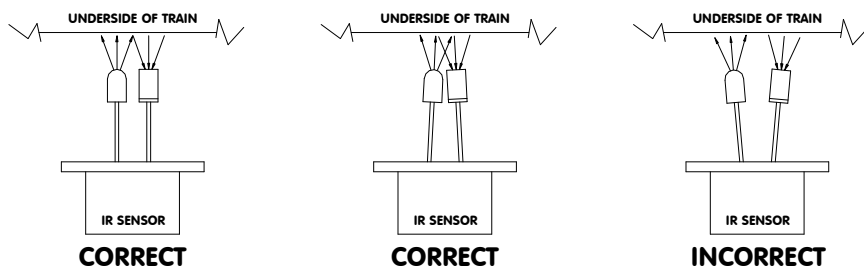


INFRARED SENSOR (IRS)

The Infrared Sensor (IRS) is not a stand alone unit. It is designed to be used in conjunction with other Sidetracked Electronics products.

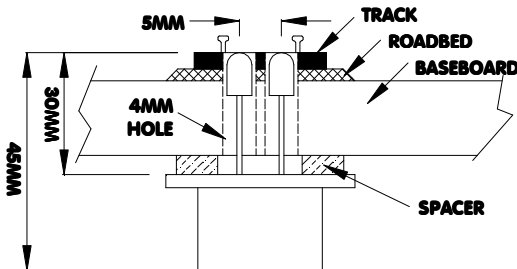
Installing Infrared Sensors

There is two parts to each IR sensor, a transmitter and a receiver. When mounting an IR sensor make sure that these two components are pointing directly up or slightly bent in towards each other. The train acts like a reflector when it passes over the IR sensor so if they are pointing away from each other the train may go undetected.



It is recommended that the IR sensors are mounted under your layout and pushed up between the sleepers in the centre of your track. Drill two 4.0mm (5/32 inch) holes with 5mm between their centres or make a 4.0mm x 9.0mm slot, being careful not to damage the track. Screw the IR sensor in place, adding a spacer if necessary so that the top of the IR sensor sits level with the top of your ballast or sleepers.

IMPORTANT: Make sure nothing covers the top of the IR sensor and that the rubber tubing that surrounds one of the sensors stays intact once the IR sensor has been installed.



© Copyright

Sidetracked Electronics

PO Box 7085, Safety Bay Western Australia, 6169

Phone: +61 8 9528 5344

Email: enquiries@sidetracked-e.com

Website: www.sidetracked-e.com